

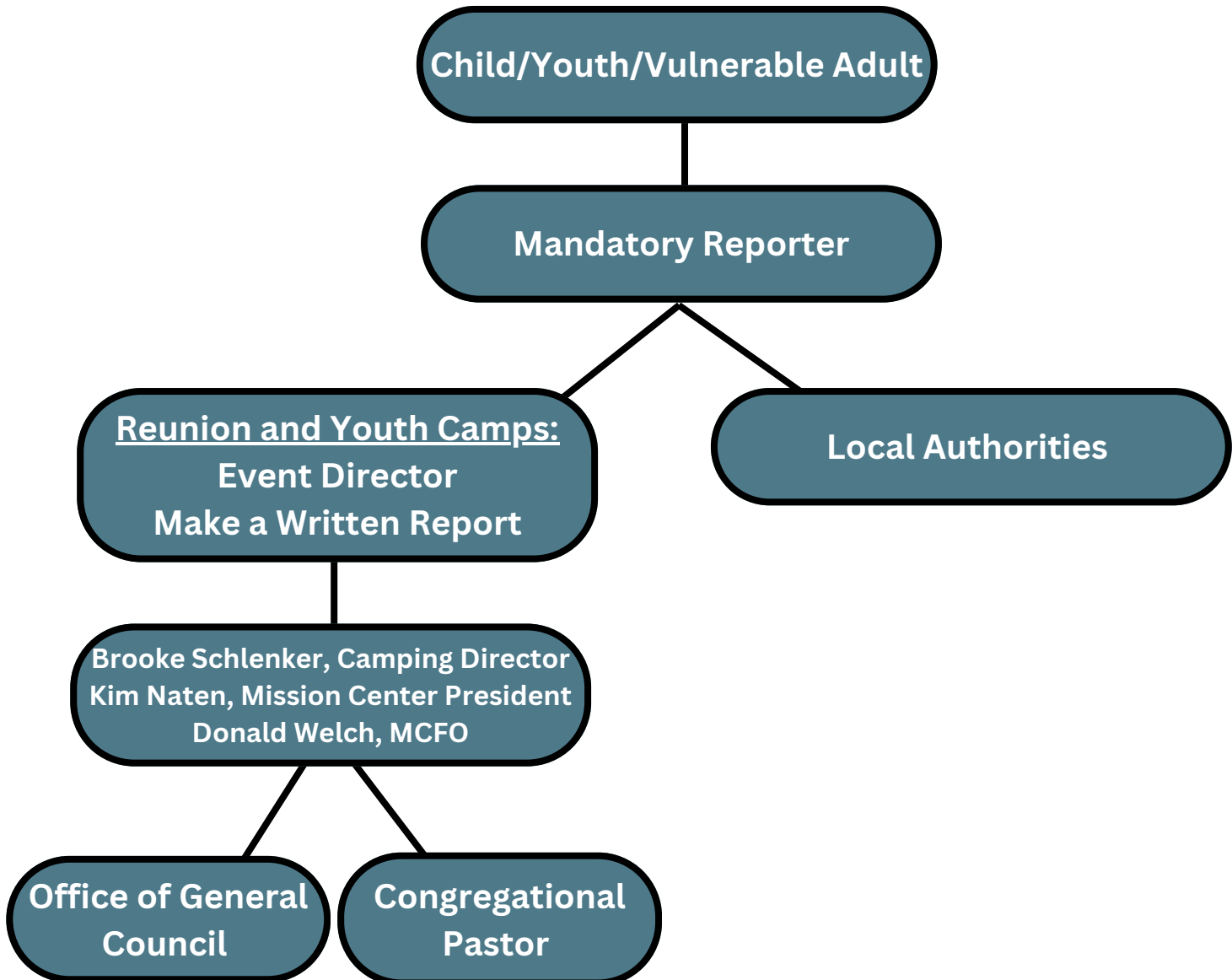


## Community of Christ

### Greater Pacific Northwest USA Mission Center

# Mandatory Reporting: To Whom Do You Report?

To uphold the safety and well-being of the child/youth, the following process must be followed through immediately after an allegation of abuse is shared or witnessed.



And that's all there is to it. If you are told or if you witness abuse, you only need to tell two people. If anybody down the flow-chart has further questions for you, they will contact you. But your job is done. In all situations, if you are not sure, contact

Brooke Schlenker: 319-939-7623, [bschlenker@cofchrist-gpnw.org](mailto:bschlenker@cofchrist-gpnw.org)

Kim Naten: 360-520-7646, [knaten@cofchrist-gpnw.org](mailto:knaten@cofchrist-gpnw.org)

Donald Welch: 712-310-0718, [dwelch@cofchrist-gpnw.org](mailto:dwelch@cofchrist-gpnw.org)

If you cannot reach any of the above, please contact World Church Risk After Hours Emergency at 816-853-0012