

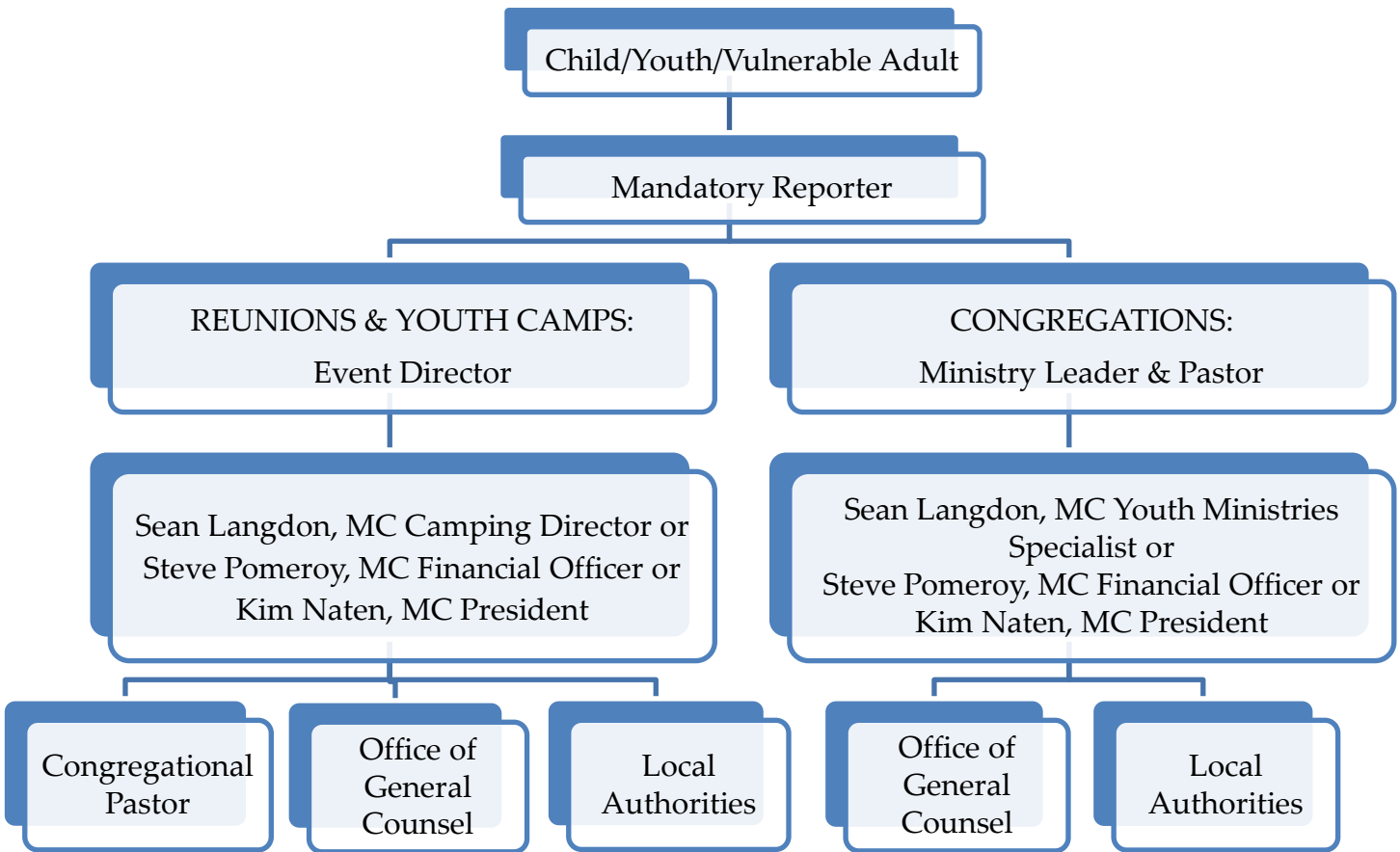


Community of Christ

GREATER PACIFIC NORTHWEST USA MISSION CENTER

Mandatory Reporting: To Whom Do You Report?

To uphold the safety and well-being of the child/youth, the following process must be followed through immediately after an allegation of abuse is shared or witnessed:



In all other situations, or if not sure, contact:

- **Sean Langdon:** 425-293-6366 (cell), slangdon@cofchrist-gpnw.org,
- **Kim Naten:** 360-748-3562 (home office), 360-520-7646 (cell), knaten@cofchrist-gpnw.org
- **Steve Pomeroy:** 425-457-0739 (cell), spomeroy@cofchrist-gpnw.org

If you cannot reach any of the above, contact World Church Risk After Hours Emergency at 816-853-0012.

GPNW Mission Center leadership will notify the appropriate mandatory reporter(s) once the report has been filed with local authorities.